

LAV 700

The General Dynamics Land Systems LAV 700 provides a next-generation wheeled combat capability, based on combat-proven technology from a company with proven performance and expertise in systems integration.

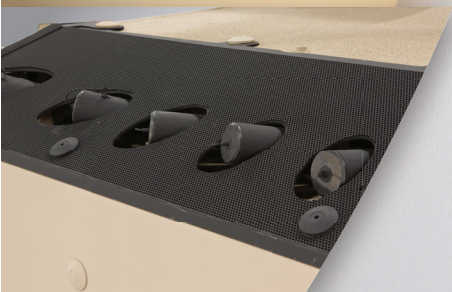
LAV 700 features a high-performance engine, driveline and suspension for unmatched mobility, and the patented Double-V™ hull, coupled with add-on defensive measures for mission-configurable protection.

The vehicle can be fitted with a wide range of weapon systems, from small-calibre Remote Weapon Systems, through medium calibre turrets, plus direct and indirect fire support for overmatching lethality.

Leading-edge systems and sensors coupled to a state-of-the-art open-architecture C4 suite ensure full mission flexibility, now and into the future.



LAV 700 is the culmination of decades of wheeled armoured vehicle technology evolution by General Dynamics Land Systems, a world-leading provider of wheeled combat vehicles. Its design leverages the extensive operational experience of our international customers to deliver unmatched capability for the soldier.



FEATURES AND SPECIFICATIONS

Size/Weight

Length	8.2m
Width	3.0m
Height (hull)	2.8m
GVWR	32,000kg
Payload	11,000kg

Performance @ GVW

Speed	>110 km/h
Range	1,000km
Trench crossing	>2.2m
Vertical step	>0.8m
Grade	60%
Side slope	30%
Turning circle	<19m

Power Train & Suspension

Engine	530kW (711hp) Caterpillar C13
Transmission	7spd automatic
Transfer case	GD 1-spd
Differentials	GD Limited slip
Tires	14.00R20 or 16.00R20 with run-flat

- Advanced 8-wheel, independent, hydropneumatic suspension
- Vehicle attitude/ride height control system (nominal/transport/mine-high)
- Full-time 4WD (rear), with selectable 8WD
- Forward 2-axle steering
- Drum or Disc brakes
- Anti-Lock Braking System
- Central Tire Inflation System

Protection

- Inherent mineblast protection via Double-V hull
- Scalable ballistic protection
- Energy attenuating seats
- Laser Warning System
- NBC detection/protection
- Automatic fire suppression
- Multi-spectral smoke grenade launchers
- Over pressure system (on some variants)

Knowledge/C4ISR

- Direct view optics for 360° visibility
- Enhanced day/night 360° situational awareness system
- Open-architecture C4 system, fully compatible with all radios and connected equipment
- CANBUS Vetronics layer
- Fast/Gigabyte Ethernet and Video networks
- Battle Management System
- On-board vehicle Health and Usage Monitoring System (HUMS)

OPTIONS

Transportability

- Self deployable over long distance with minimal support
- C17, A400
- Amphibious Assault Ship
- Landing Craft, Medium/Dock
- Rail and road

Armament

Remote Weapon Station:	
Primary	12.7/7.62mm
Medium Calibre Turret:	
Primary	30/40mm
Secondary	7.62mm
Large Calibre Turret:	
Primary	90mm or 105mm
Secondary	7.62/12.7mm
Semi/Automatic Mortar:	
Primary	120mm mortar
Anti-Tank Guided Missile:	
(Stand-alone or integrated to medium calibre turret)	

Protection

- RPG protection nets
- EFP protection modules
- Multi-spectral camouflage
- Shot detection
- Active Protection

Targeting Systems (Turrets)

- Day/Thermal targeting for the gunner and commander
- Full Hunter/Killer fire control

C4/Surveillance Systems

- Integrated UAV/UGV control
- Civilian communications
- Surveillance to >25km
- Targeting to >10km

Power

- Auxiliary Power Unit
- Enhanced Silent Watch

Mission Role Configurations

- Personnel Carrier, Command and Control, Direct Fire Support, Indirect Fire Support, Anti-Tank, Security, Reconnaissance, Surveillance, Ambulance, Repair and Recovery
- Other per customer requirements



5977 01/17